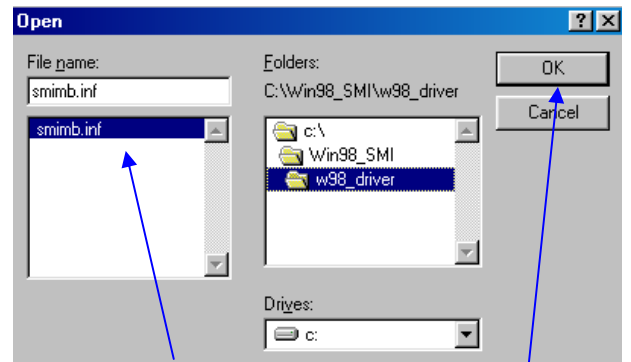
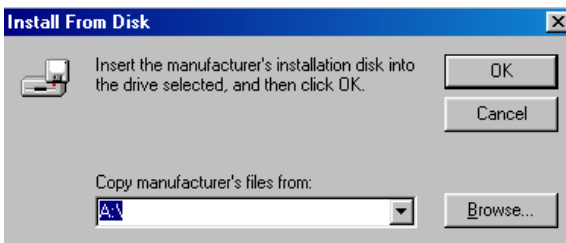
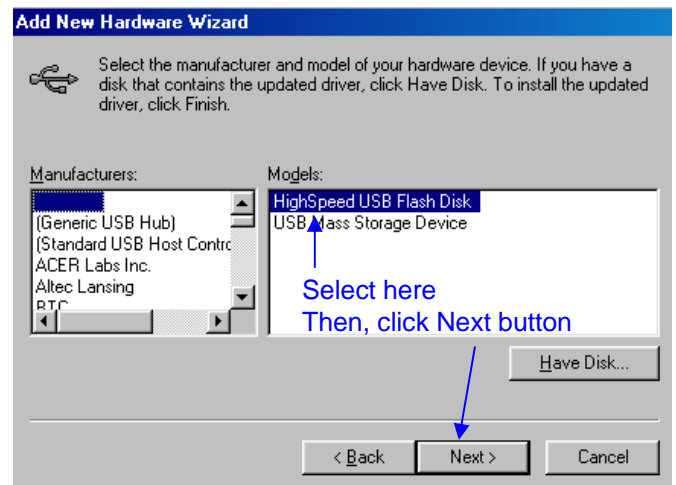
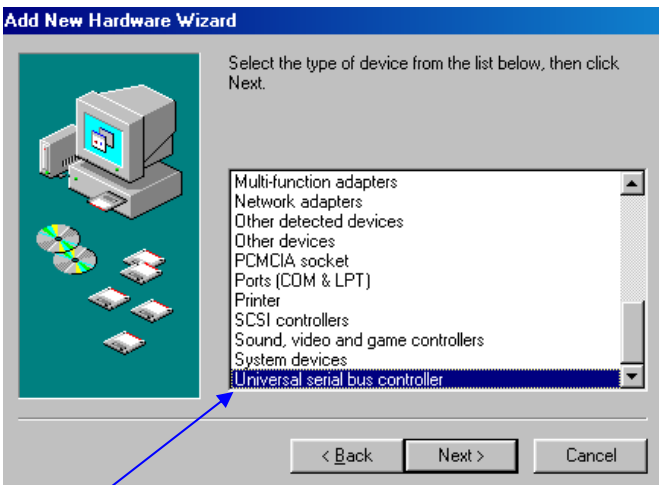
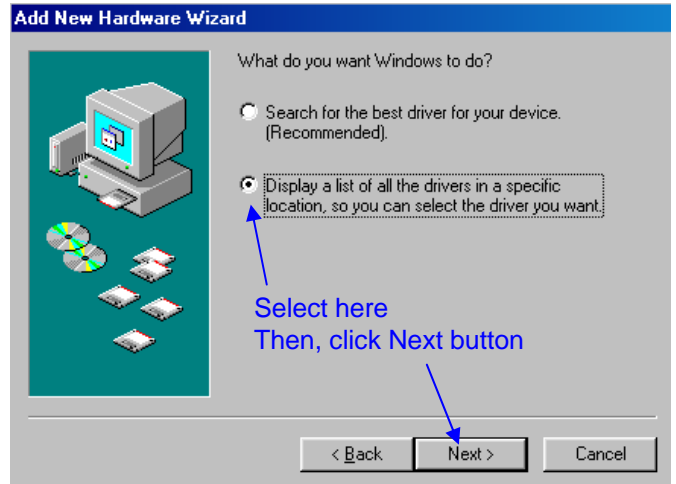
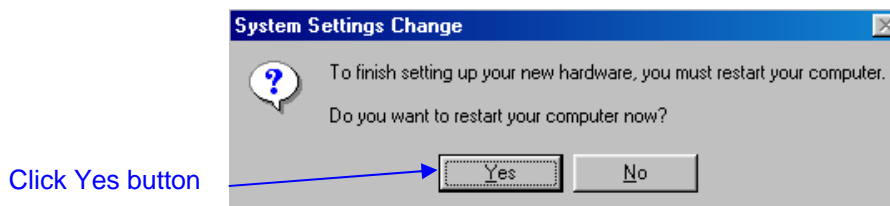
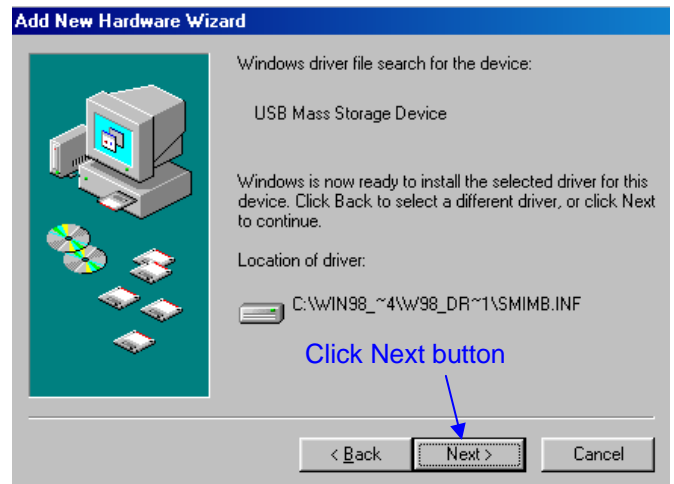
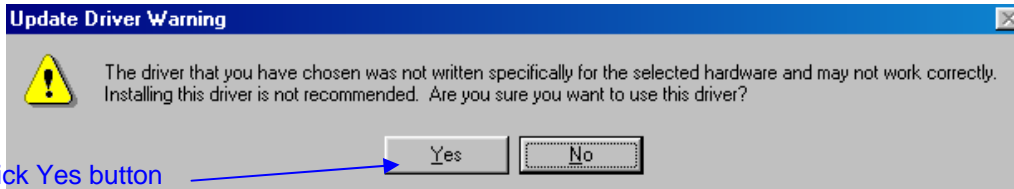
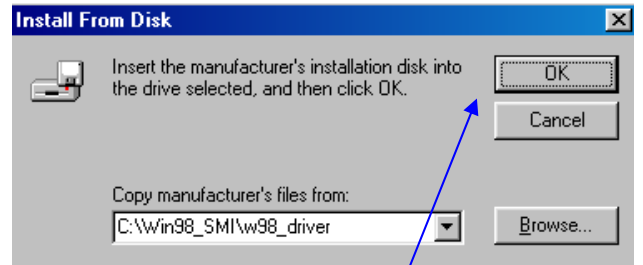
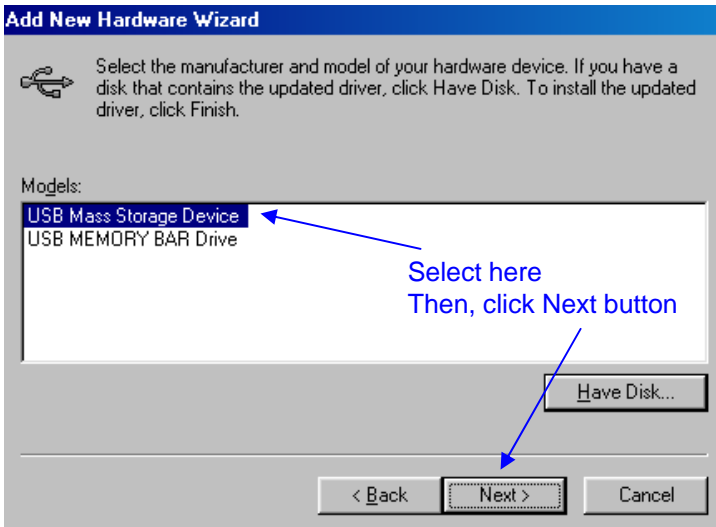


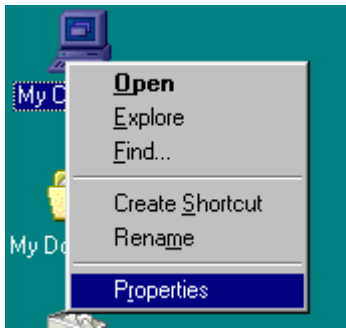
RALLY2 and ATV Windows 98 Driver Installation Guide

Download Win98_SMI.zip and R2_ATV_Windows98_SetUp_Guide.pdf from website.
Extract the zip file on the C: drive and **remember the location**.
Read through the pdf file first and follow the screenshot below.

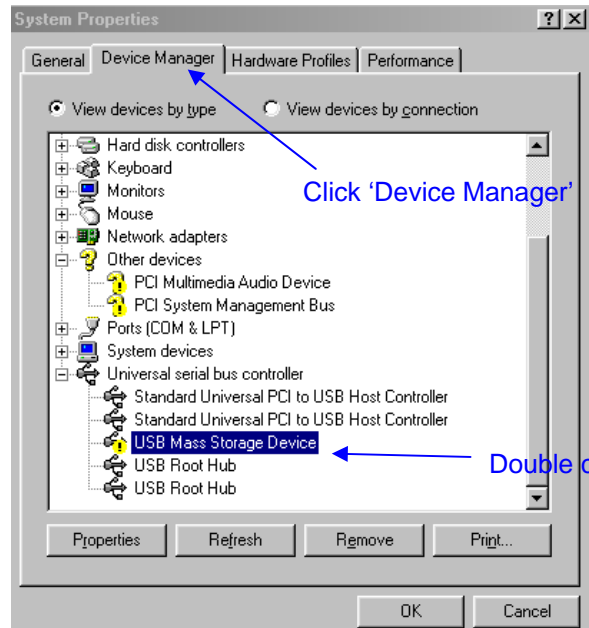




After Restart



Right Click 'My Computer' icon.
Then, click 'Properties'

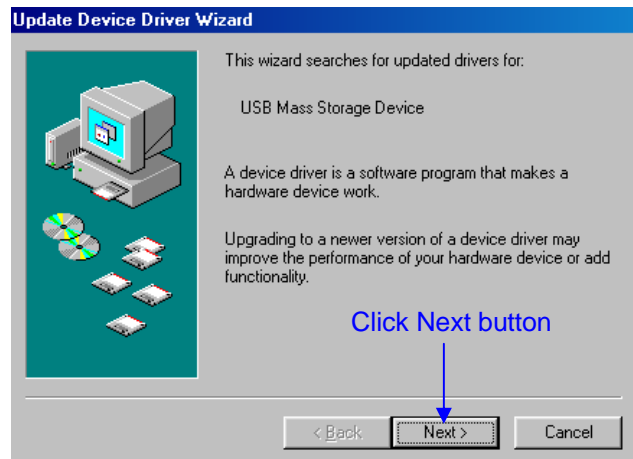


Click 'Device Manager'

Double click



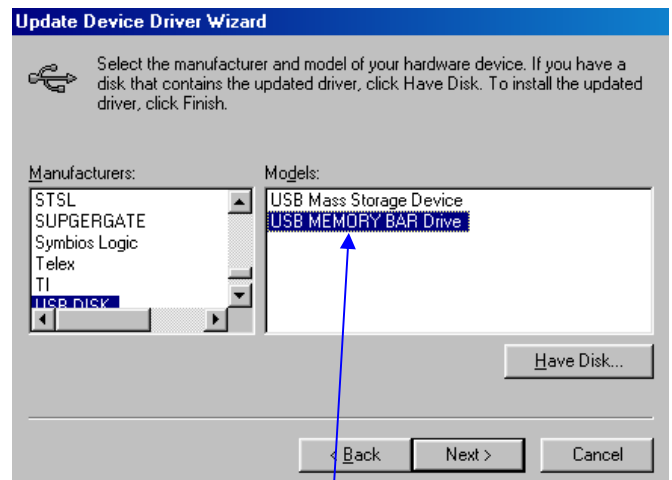
Click here



Click Next button



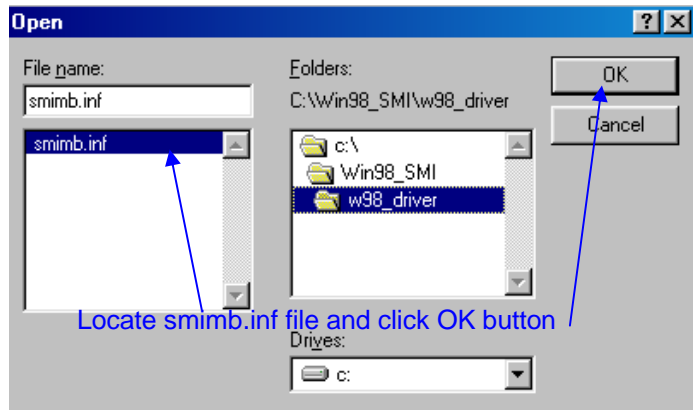
Select here
Then, click Next button



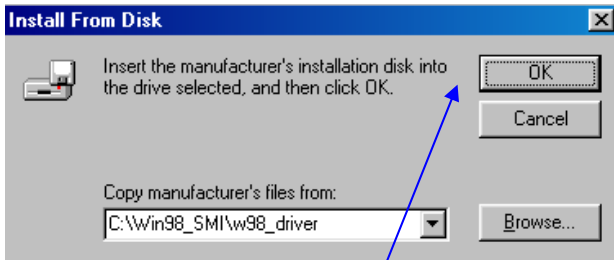
Select 'USB MEMORY BAR Drive'
Then, click 'Have Disk...' button



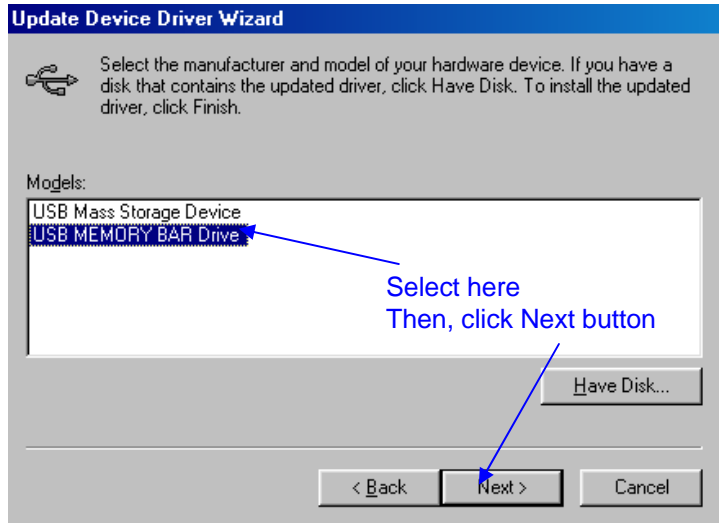
Click Browse button



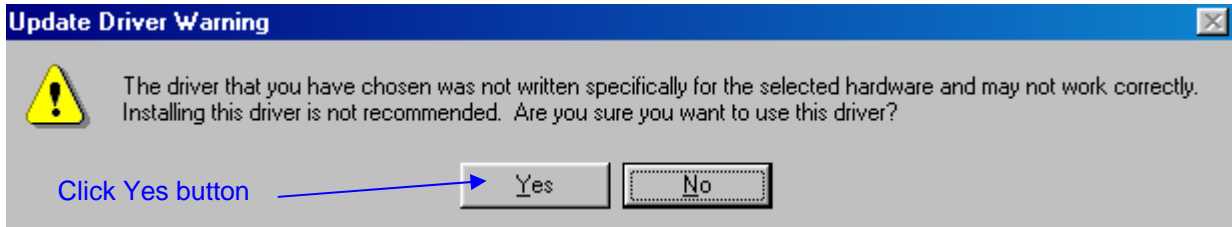
Locate smimb.inf file and click OK button



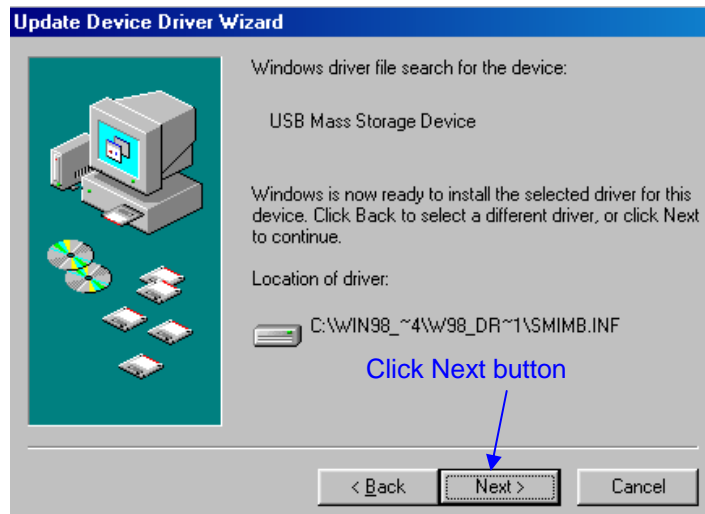
Click OK button



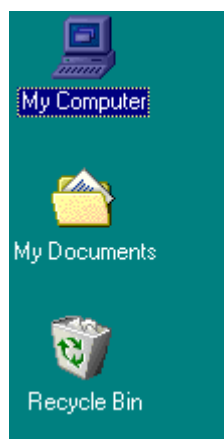
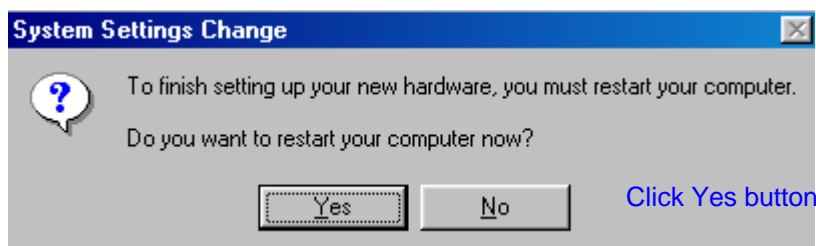
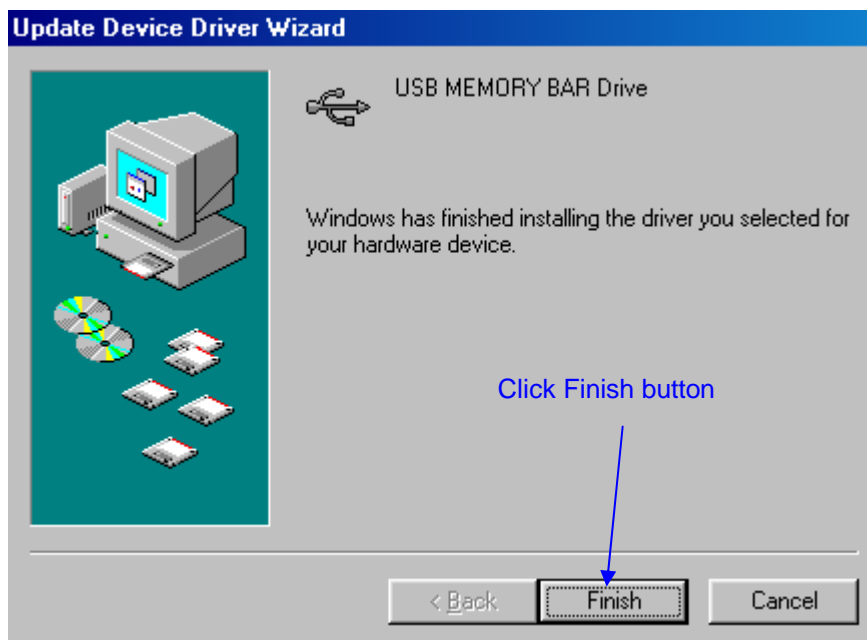
Select here
Then, click Next button



Click Yes button



Click Next button



After Restart,
Double click
My Computer icon

