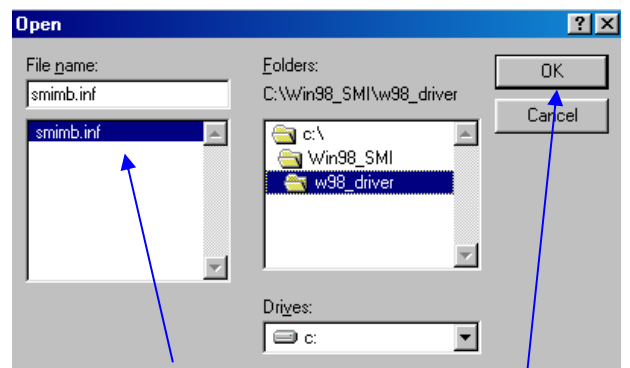
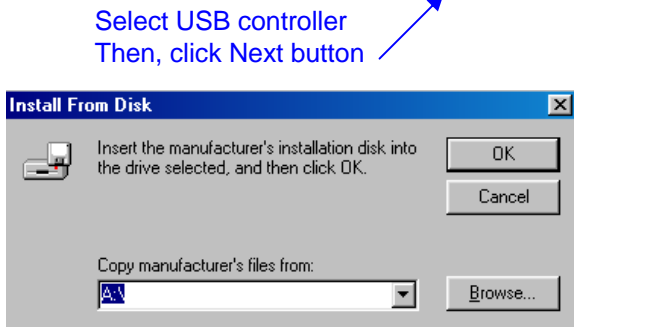
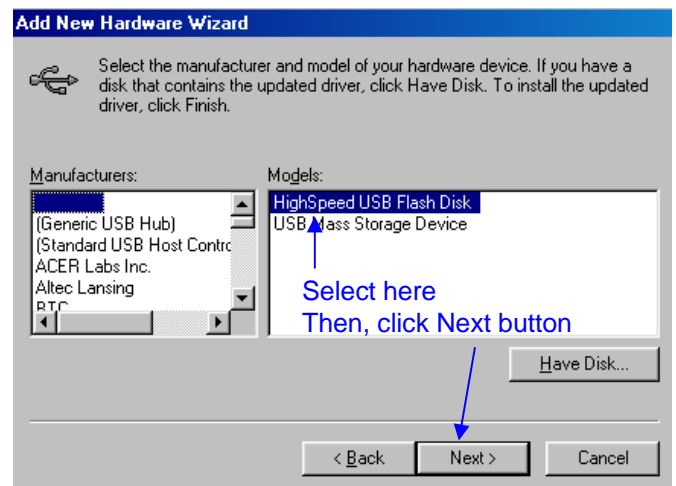
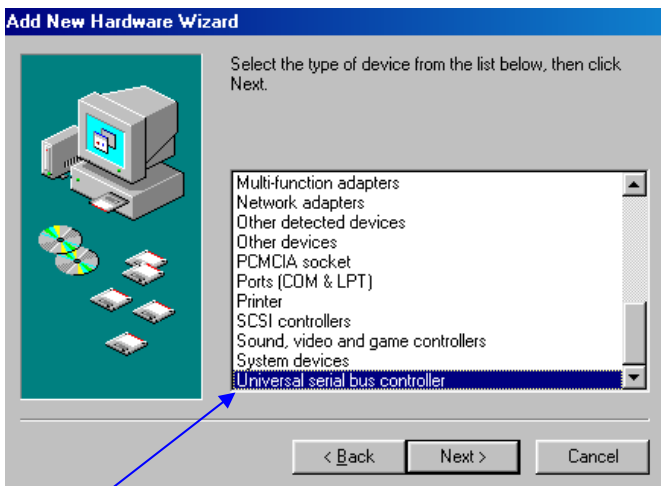


Windows 98 Driver Installation Guide for RALLY2 / ATV / RALLY2-TURBO / ATV-TURBO

Download Win98_Dr_Final.zip and Windows98_SetUp_Guide.pdf from website.
Extract the zip file on the C: drive and **remember the location**.

Find the “setup.exe” file and double click it to run the program. After restart the computer, you can now use the USB Flash drive. Plug and Play. Very simple.

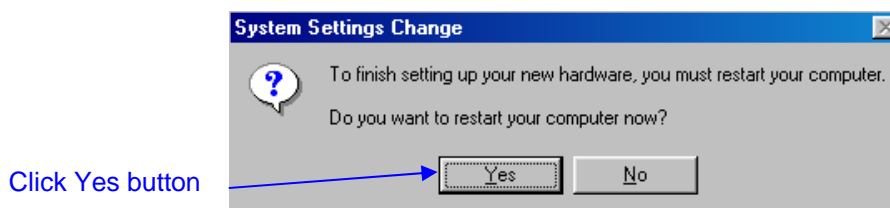
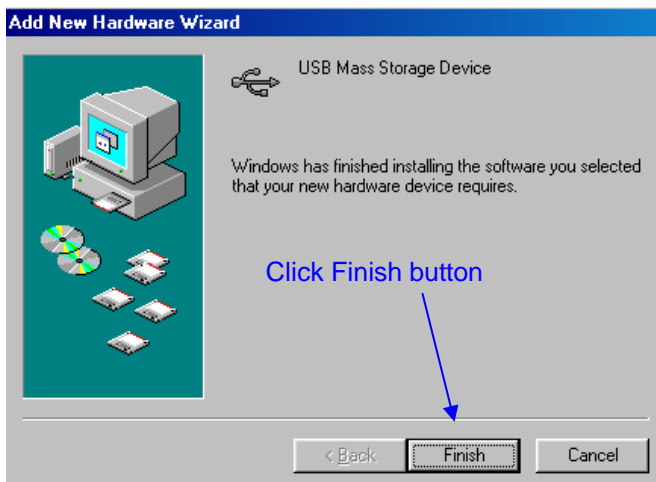
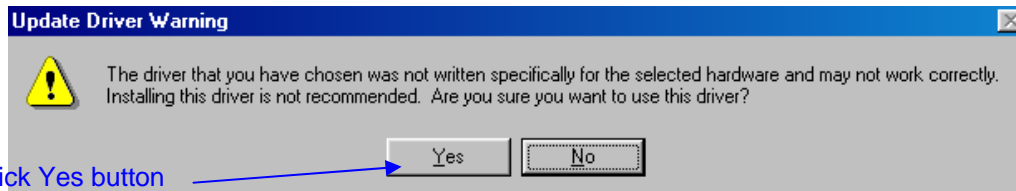
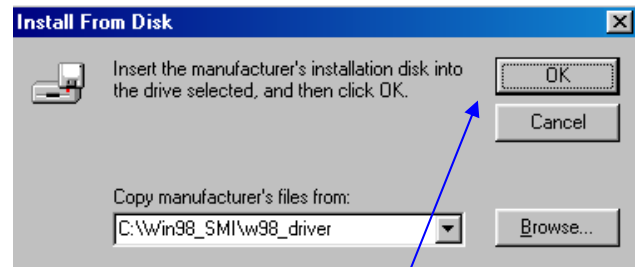
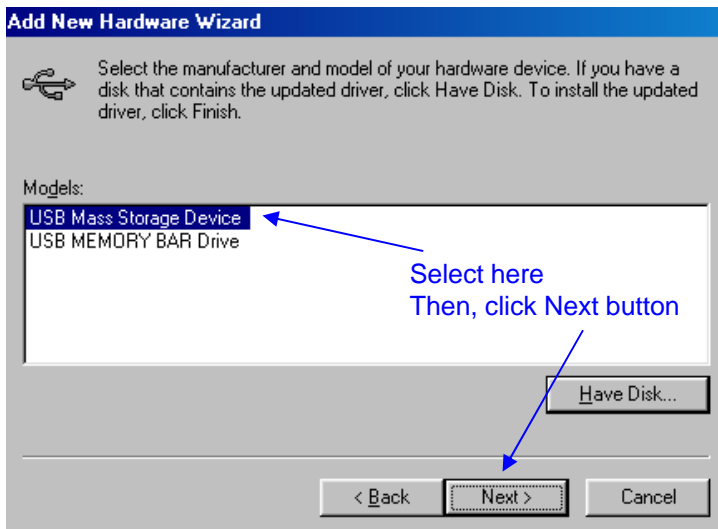
If this does not work on your computer for some reasons, please read trough the following instruction and follow the screenshot below.



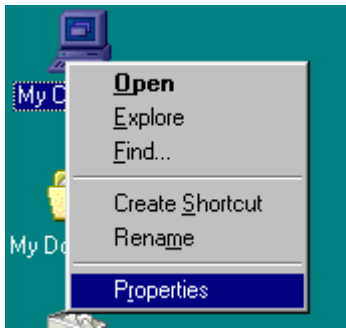
Select USB controller
Then, click Next button

Click Browse button

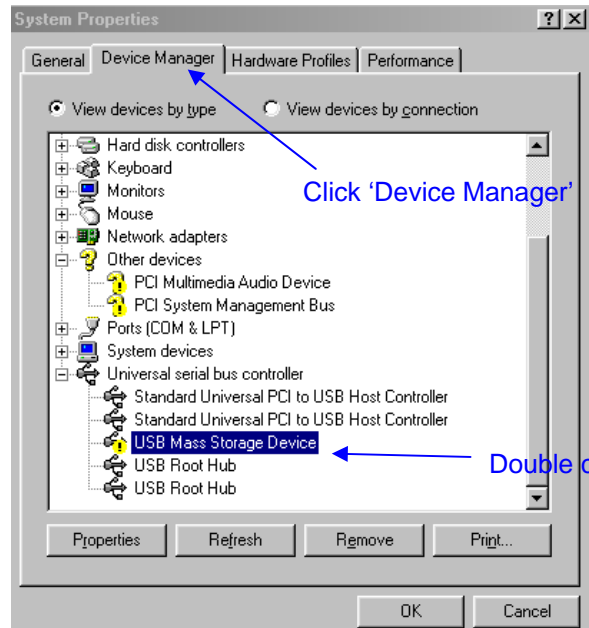
Locate smimb.inf file and click OK button



After Restart



Right Click 'My Computer' icon.
Then, click 'Properties'

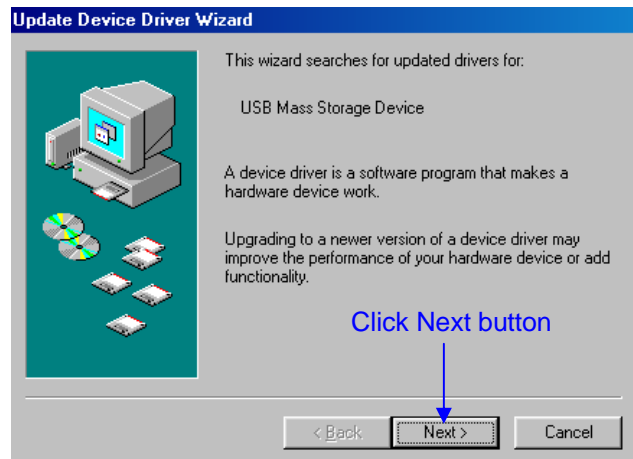


Click 'Device Manager'

Double click



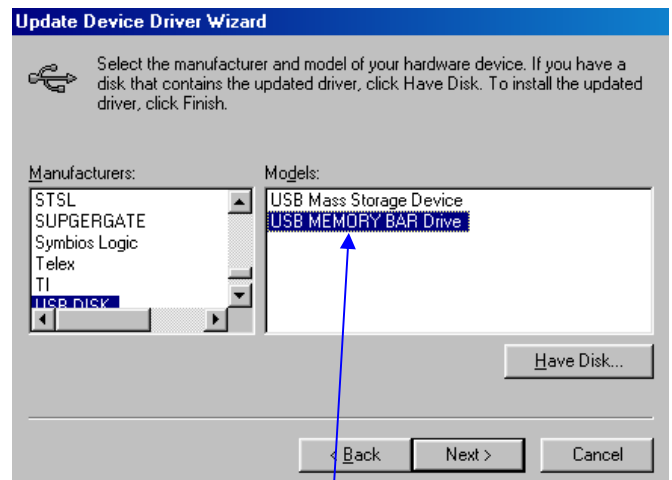
Click here



Click Next button



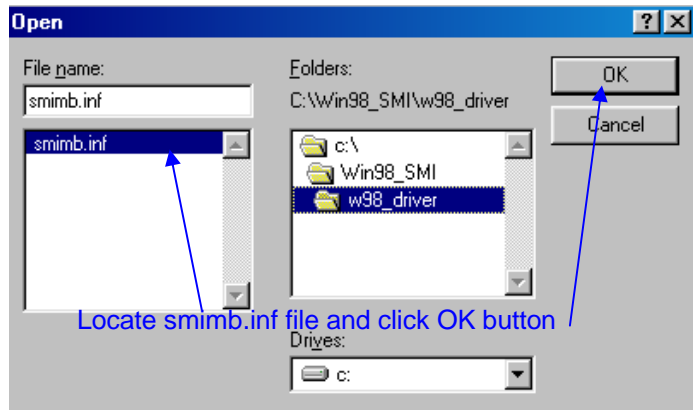
Select here
Then, click Next button



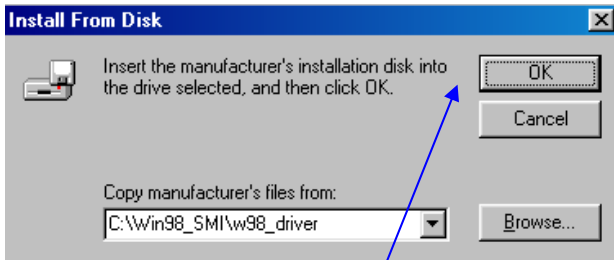
Select 'USB MEMORY BAR Drive'
Then, click 'Have Disk...' button



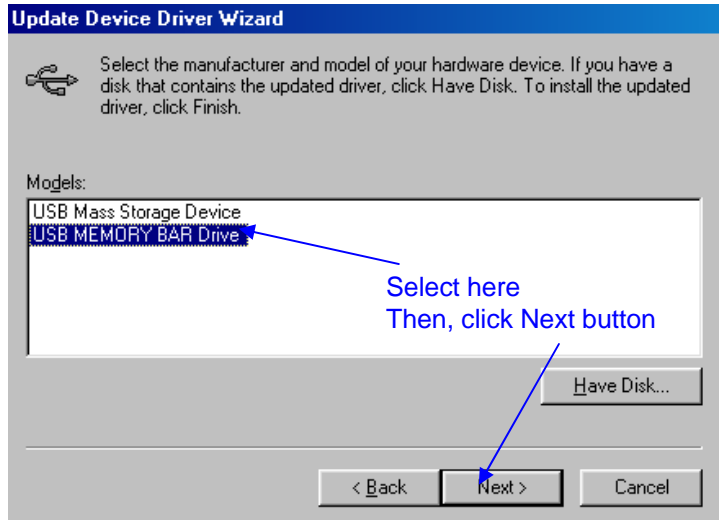
Click Browse button



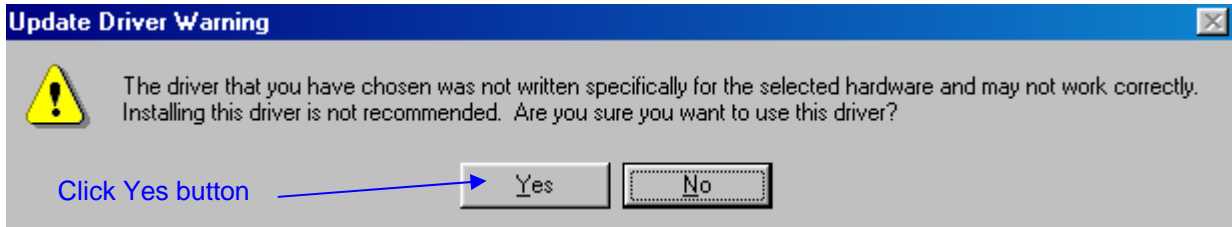
Locate smimb.inf file and click OK button



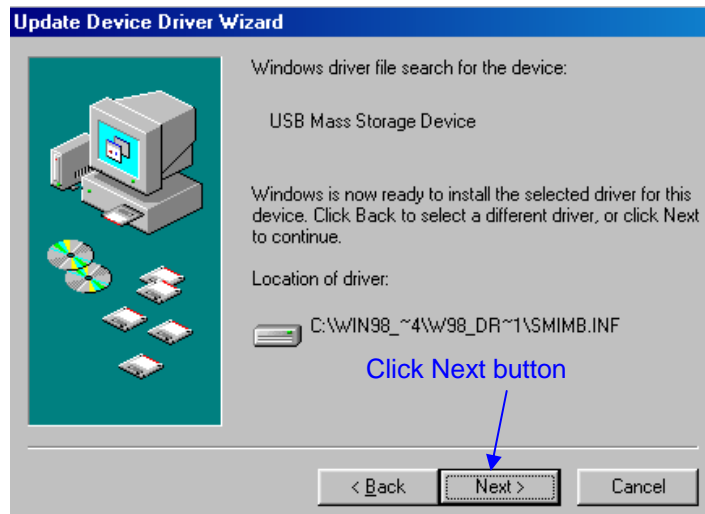
Click OK button



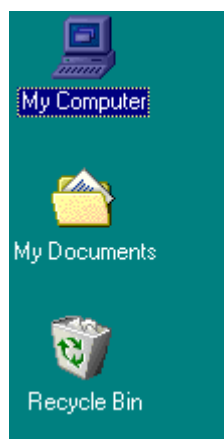
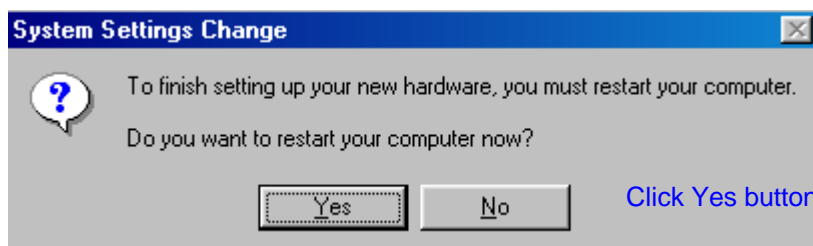
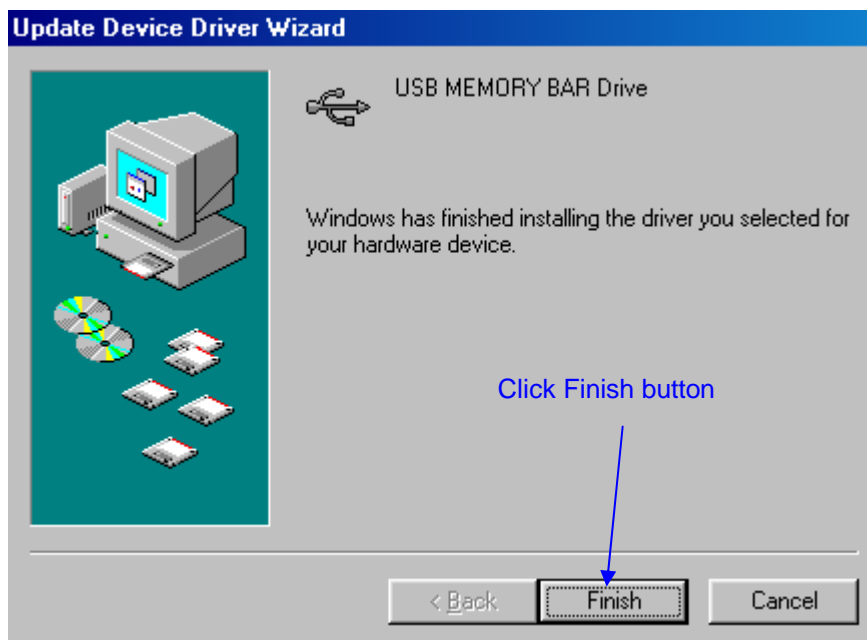
Select here
Then, click Next button



Click Yes button



Click Next button



After Restart,
Double click
My Computer icon

